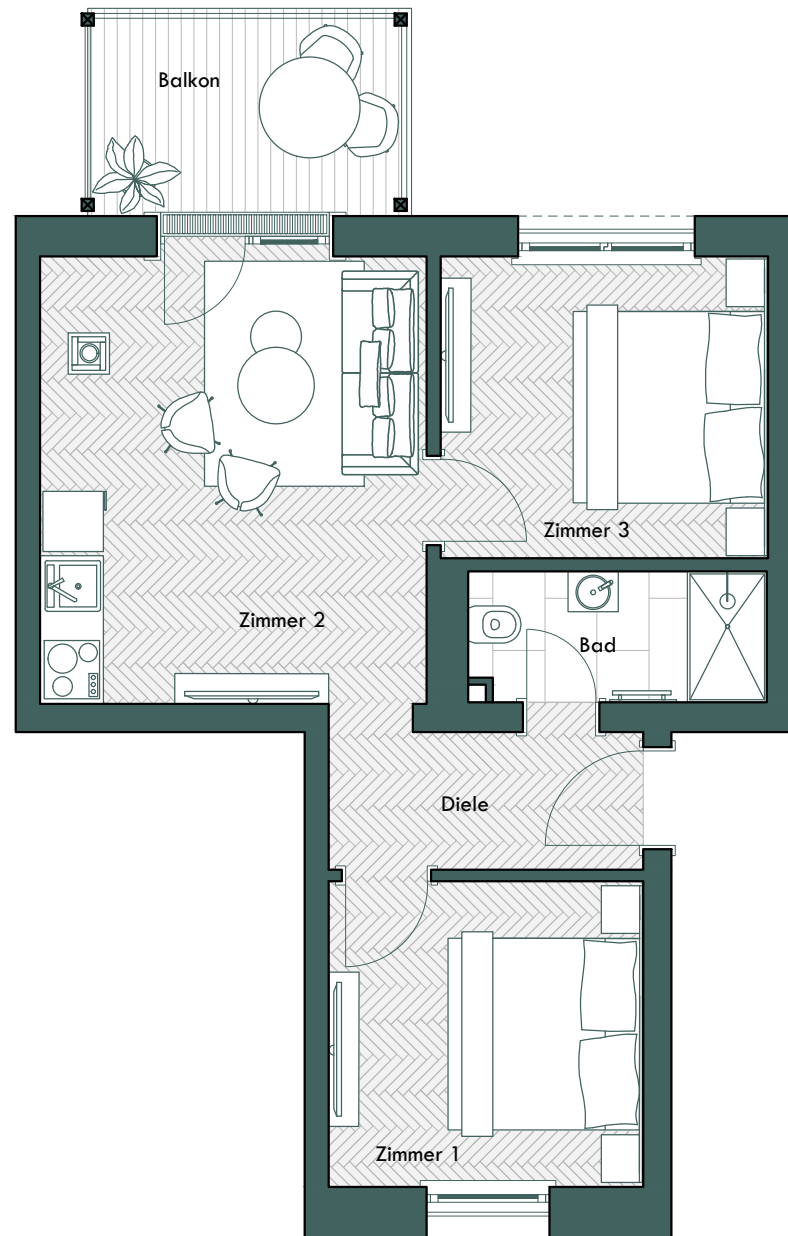
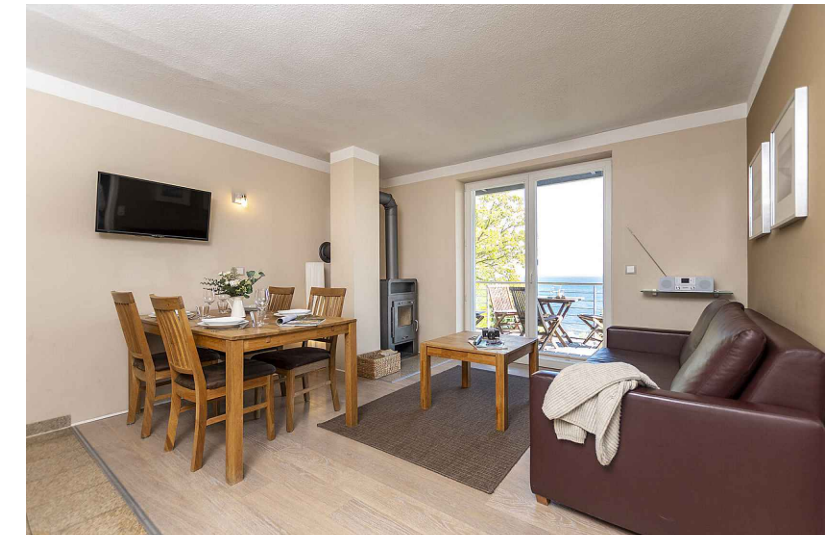


Nr. WE 1.4, 2.4 / EG - 1OG / 3 Zimmer-Wohnung

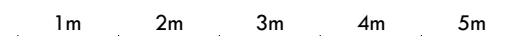
No. WE 1.4, 2.4 / First and second floor / Apartment with 3 rooms



	qm
Diele / Hallway	4.26
Zimmer 3 - Schlafen 1 / Bedroom 1	9.73
Zimmer 2 - Wohnen, Essen / Living room, dining room	16.88
Zimmer 1 - Schlafen 2 / Bedroom 2	9.45
Bad / Bathroom	3.80
Balkon (50%) / Balcony	3.02
Summe / Total	47.14



Variante mit drei Zimmer / Three-room option



Ihren PKW-Stellplatz können Sie zusätzlich zum Preis von 17.000 - EUR erwerben.
 Die Loggien und Balkone sind zu 50% in die Wohnflächen eingerechnet und Terrassen zu 25%.
 You can also purchase a parking space at the price of 17,000 EUR.
 The loggias and balconies are included in the living area at 50% and the terraces at 25%.